

New York City, New York

# SCREENS: The Installation

Kelsey Sharpe

1 August - 2 August 2018

PRESS CONTACT:

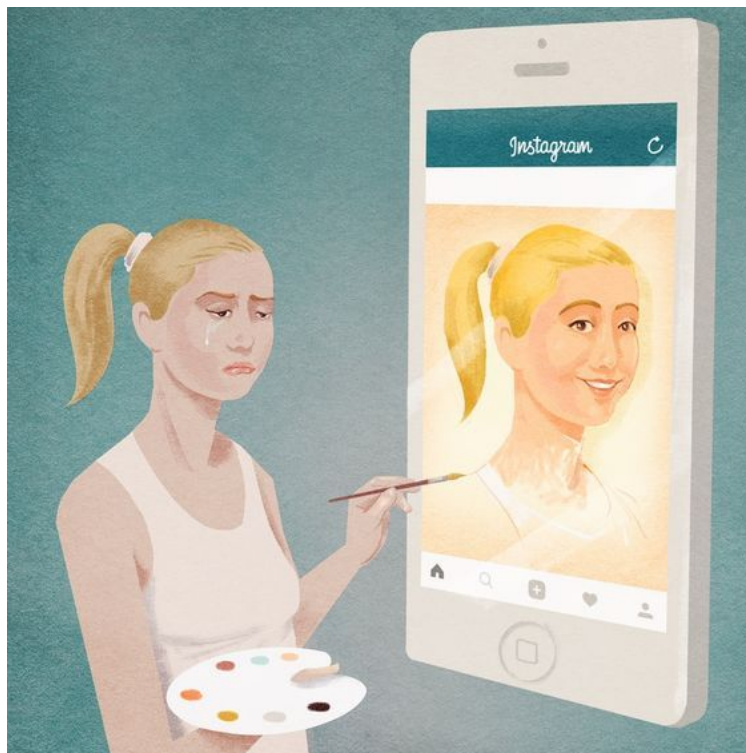
Juliet Aguerre

P: 201.687.8647

AGUERRE.JULIET@GMAIL.COM

## The Cell theatre presents “SCREENS: The Installation

The immersive multimedia rendering of how the digital impedes upon our sense of reality.



---

### Kelsey Sharpe's "Screens: The Installation"

Opening on Wednesday, August 1st from (7pm to 10pm)

Installation viewing remains open until Thursday, August 2nd



“Within ten minutes I am partway through a dozen digital interactions, but none are complete.” Michael Harris

Taking a pivotal turn on society’s norm, **SCREENs** creates a space for rumination within, yet away from, the hustle and bustle of New York City...untouched by the toxicity of our egos. In **SCREENs** we have the chance to examine our habits under a figurative microscope, where our digital world is amplified and multiplied and extended into the surreal stratmosphere of imagination. **SCREENs** creates a world eerily similar to our own that is so connected to our present that one forgets what realm we’re actually in. **SCREENs** tinkers with the exciting ways our minds can split themselves to become adaptable to anything and everything. The cerebrum of contemporary society has split into two worlds: the digital world and physical world, a lens within. So what happens when the digital, distorted

version of reality becomes us? And what does mainstream media, accessed through screens, tell us about our humanity, our ability to think clearly and deeply? Is it helpful or inhibiting? Does it guide us too much to the point where our opinions start to mimic the “widely acceptable”? Step into **SCREENs** for a breathe and a space to, if anything, have an immersive experience unlike any you’ve had before.

[Watch our launch video](#)

## About The Artist

### KELSEY SHARPE

Headshots by Angel Pelaez



*“Since knowledge is infinite, it has infinitely fell upon [us]” - Erykah Badu*

Kelsey Sharpe is entering her senior year at Oberlin College with a double major in Anthropology and Cinema Studies. She was raised in a biracial family, part Jamaican part Irish-Slavic American, set between two opposing worlds: the Jersey suburbs and Jersey City, NJ wherein the confluence of her whiteness and blackness left her claiming both and neither at the same time. Throughout her time at Oberlin College, she has experienced a lack of racial, cultural and socioeconomic diversity, motivating her to use academia and art (i.e. film) together as a way to expose and address socio-political issues. Kelsey hopes to create a dialogue focused on dismantling systems of power so that we, as people, can claim that power in our individual lives and then extend that to the collective in a loving and deeply thoughtful way.

[Read More On: Kelsey Sharpe, SCREENS, and its purpose on our website](#)

---

© the cell

338 W 23rd St New York, NY 10011

(646)861-2253

PRESS CONTACT:

Juliet Aguerre

P: 201.687.8647

AGUERRE.JULIET@GMAIL.COM